



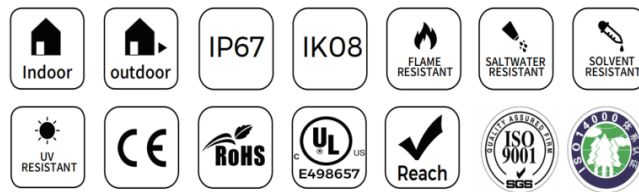
SPEC SHEET: PIXEL-FREE LED ROLL 13MM LED STRIP LIGHT

Pixel-Free LED Roll 13mm LED Strip Light is a beautiful direct view (or indirect view) light that is capable of bending up and down (like a roller coaster) for a great combination of even light distribution, rich color possibilities and quick installation. The outdoor rated casing (IP67) is suitable for both indoor or outdoor use, durable yet flexible in nature and resistant to saline, solvents, anti-yellowing or aging UV protection, and comes complete with numerous ratings to be used in event, theme parks, retail, commercial and residential settings. Available in single color whites (Color temperature ranging from 2300K - 5000K), Single Color Green or Blue, RGB (Red, Green, Blue), RGBW (Red, Green, Blue, White), CCT (Controllable Color Temperature), and even Pixel-Controlled (each pixel individually controlled) RGB.

Product Features:

Even Light Distribution WithOUT Hot Spots
Wide 118° Light Angle Illumination
Flexible & Water Resistant IP67 Jacketing
High CRI (>90) For Beautiful Light Output

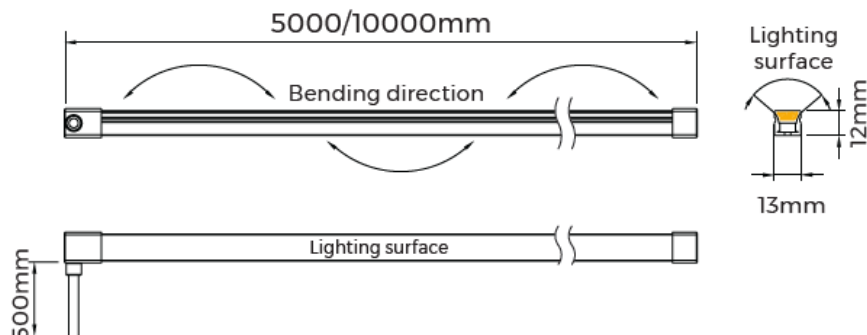
Pixel Diffusion to Eliminate Reduce Hot Spots and Shadowing
Flexible, Beautiful Direct View Light
Perfect For Signage, Architectural, Indoor/Outdoor Linear Light
3-Year Warranty



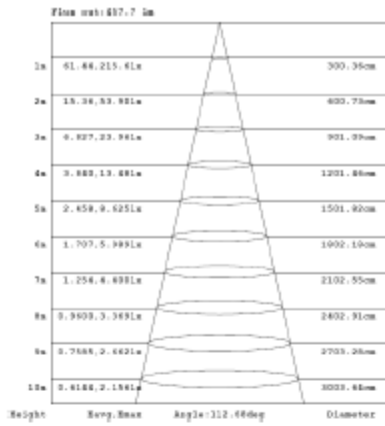
Size	SKU	Color	Voltage	Brightness	Consumption	Cut Point	Rating	Max Length
13 x 12mm	LDR201	Cool White (5000K)	24V DC	460 Lumens/m	9.6w/m	50mm	IP67	10M
13 x 12mm	LDR202	Natural White (4000K)	24V DC	520 Lumens/m	9.6w/m	50mm	IP67	10M
13 x 12mm	LDR203	Warm White (2700K)	24V DC	520 Lumens/m	9.6w/m	50mm	IP67	10M
13 x 12mm	LDR204	Candle White (2300K)	24V DC	520 Lumens/m	9.6w/m	50mm	IP67	10M
13 x 12mm	LDR211	Blue (465-470nm)	24V DC	N/A	8w/m	50mm	IP67	10M
13 x 12mm	LDR212	Green (525-530nm)	24V DC	N/A	8w/m	50mm	IP67	10M
13 x 12mm	LDR221	RGB (Red, Green, Blue)	24V DC	N/A	12w/m	83mm	IP67	5M
13 x 12mm	LDR222	RGBW (Red, Green, Blue, White - 4000K)	24V DC	N/A	14.4w/m	62.5mm	IP67	5M
13 x 12mm	LDR249	Pixel-Controlled RGBW (Red, Green, Blue, White - 4000K)	24V DC	N/A	18w/m	71.43mm	IP67	5M
13 x 12mm	LDR239	CCT (Controllable Color Temperature (2300 - 4000K)	24V DC	N/A	12w/m	100mm	IP67	5M

Working Temp: -20~45°C
Storage Temp: 0°~60°C

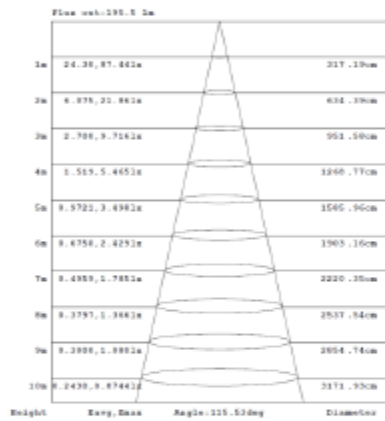
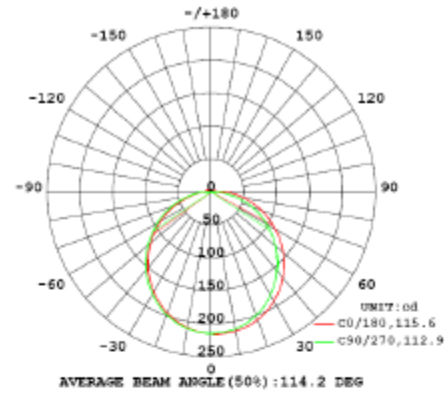
STRUCTURAL DIAGRAM:



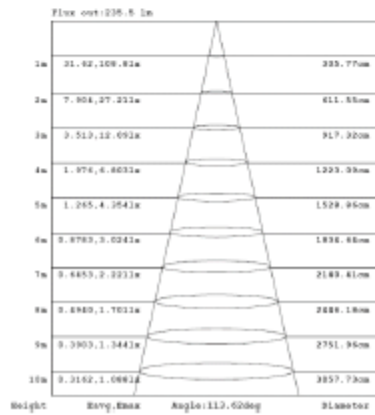
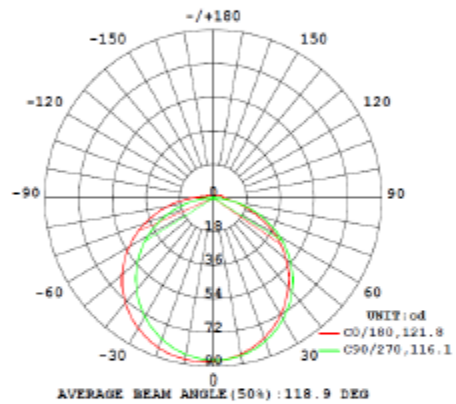
LIGHT DISTRIBUTION



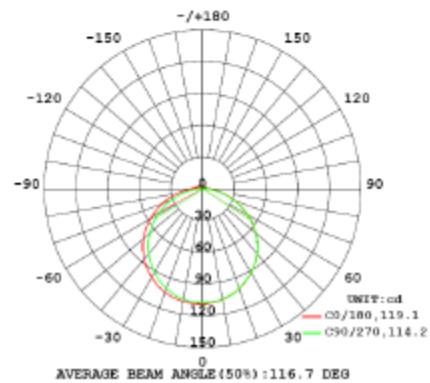
White Light Neon Strip



RGB Neon Strip

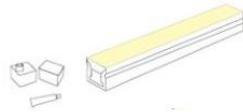


RGBDW Neon Strip

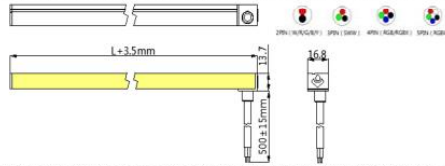
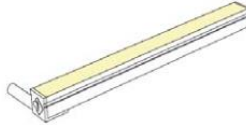


END CAP SOLUTIONS

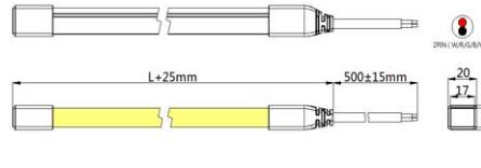
silicone End-Cap



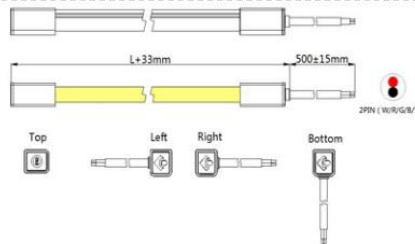
Shadowless End-Cap



full protective End-Cap



Weld-free waterproof End-Cap

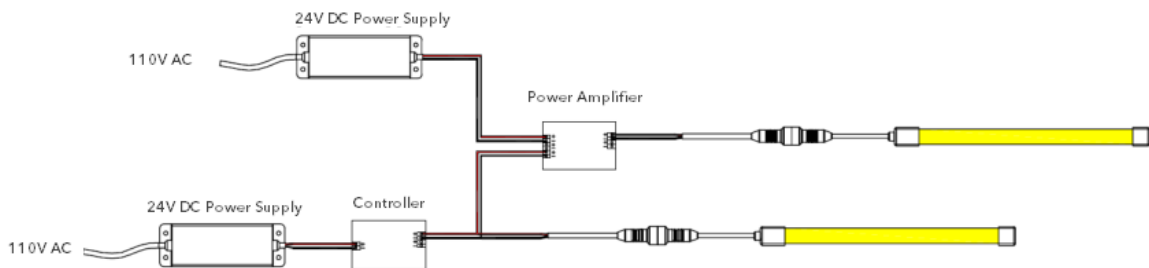


WIRING DIAGRAM

NON-DIMMABLE

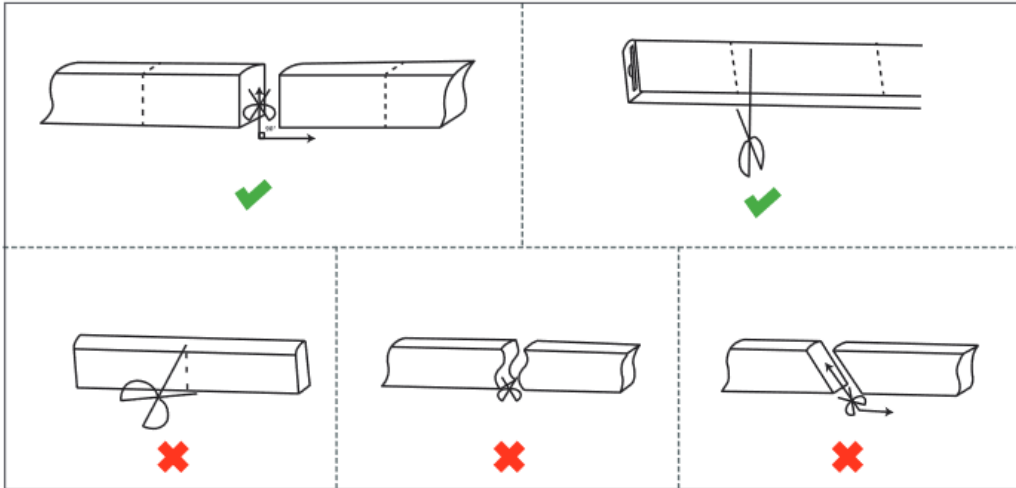


DIMMABLE

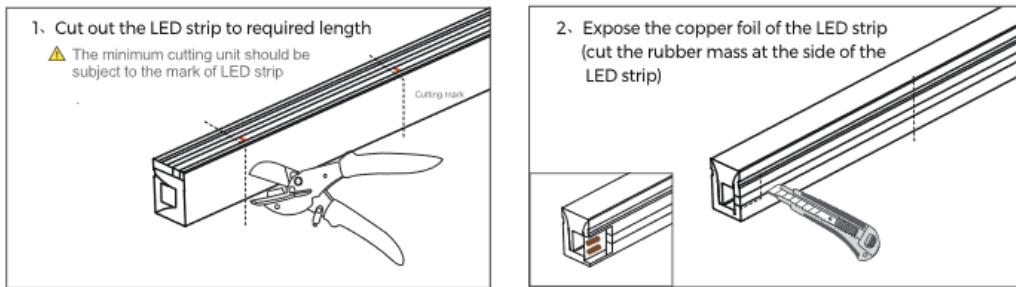


CUTTING/CONNECTION INSTRUCTIONS

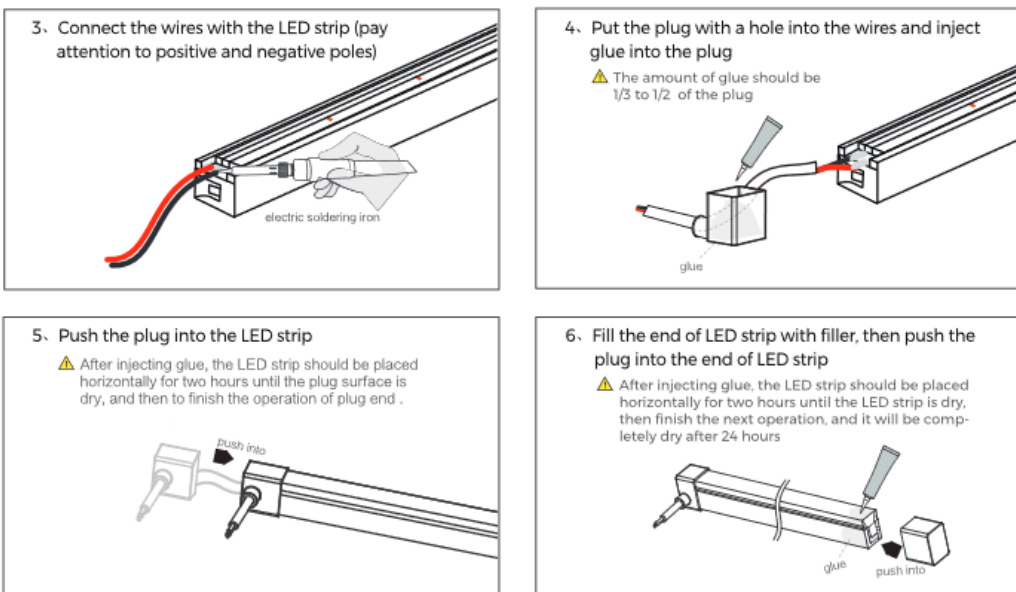
It is highly recommended to cut the LED at a straight 90° angle directly on the cut sections marked on the exterior jacket. This will avoid damaging LEDs inside the housing. Cutting at an angle is not recommended as it can cut areas not intended to be trimmed, which may have adverse effects.



Once the LED is cut, use flush cutters or razor blade to expose the backside of the LED strip. The backside is the same side as the cut marks on the side of the jacket.

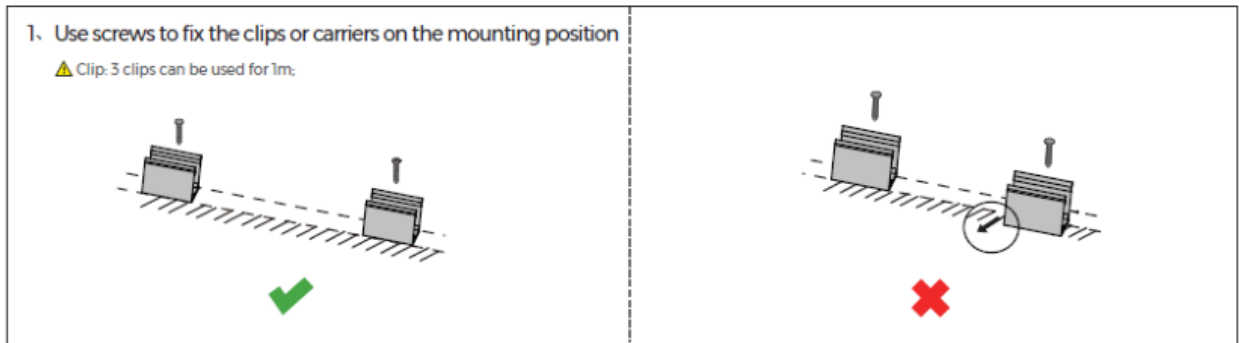


Proceed in soldering your wires to the LED strip, paying attention to the polarity.

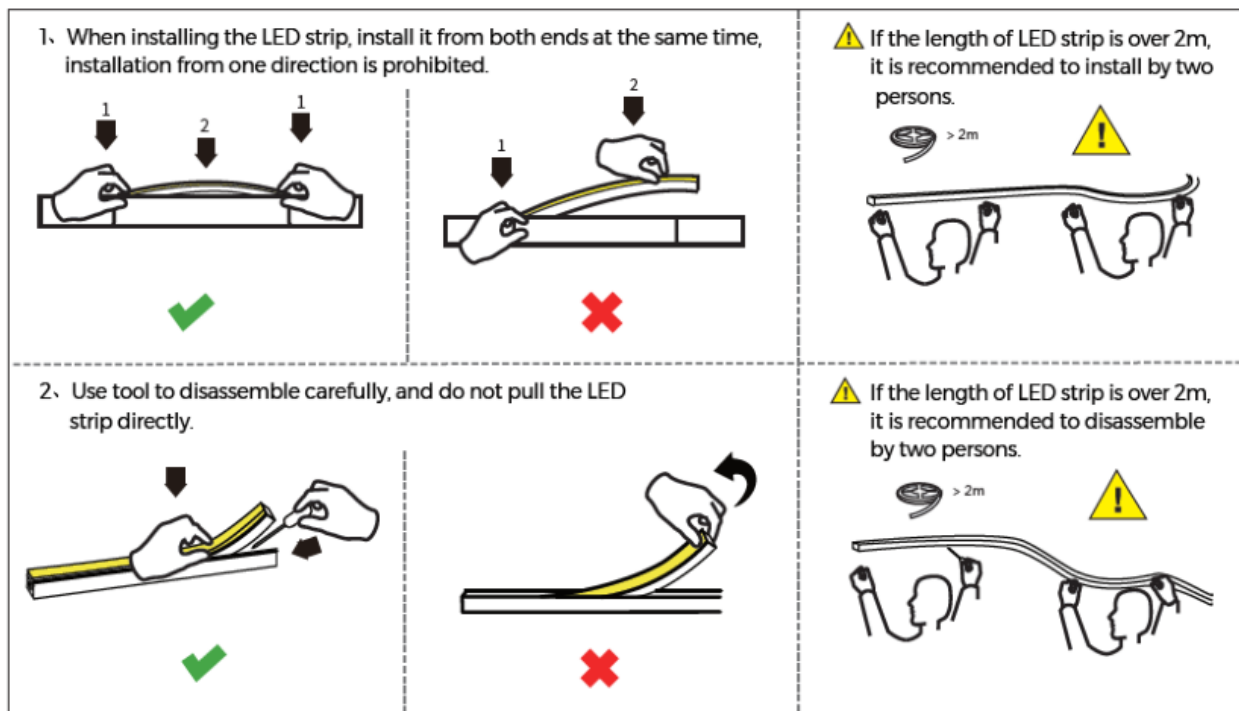


INSTALLATION INSTRUCTIONS

Using mounting clips - Make sure the mounting clips are on the same plane to avoid awkward bending of the strip. The channel is meant to move left and right (like a snake). Not up and down (like a roller coaster).



Installation into linear channels or substrates - It is recommended to use caution when inserting the strip into channels and various substrates. LED is not meant to have sharp bends, so make sure to use extreme caution when inserting or removing the strip from a channel.



FAQ

Can Pixel-Free LED Roll be cut?

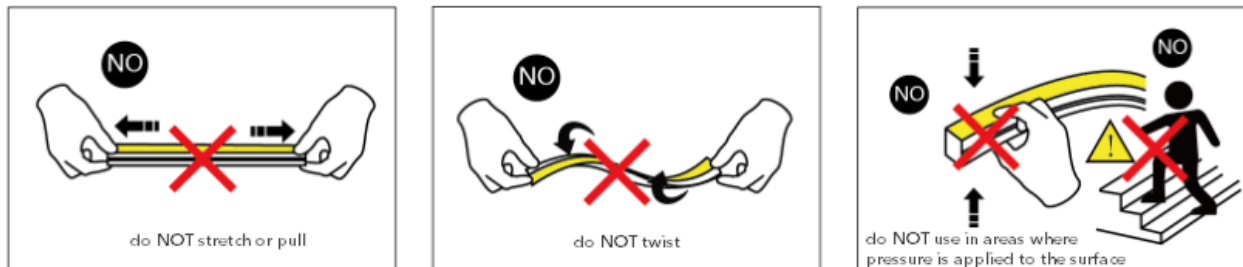
Yes, cut point on Pixel-Free LED Roll varies between 31mm (~1.2") to 83mm (~3.2"). Any cut point should be sealed with a silicon adhesive along with the silicon Pixel-Free LED Roll end caps. These end caps keep debris and moisture from entering when a waterproof adhesive (like silicon glue) is applied.

Is Pixel-Free LED Roll able to bend back and forth?

While Pixel-Free LED Roll is one of the tightest bending radius LED Strips in its class (60mm ~ 2.34"), back and forth bending can cause premature failure of the strip. We recommend handling the product with care, and bending minimally while the product is placed in its fixed location. Do not try to stretch the LED to pull it taut over long distances, and do not twist or distort the jacket to turn into tight corners. Doing so can cause failure to the strip.

Can You Install Pixel-Free LED Roll On Floors?

Pixel-Free LED Roll is able to be installed on steps to illuminate pathways, however it should be used on the bottom side of steps where minimal to no pressure is applied. Do not install in areas where it will be walked on or have pressure applied for best results.



PRECAUTIONS

- Use 24V DC Isolated Power Supply to drive Pixel-Free LED and the confirm ripple wave of constant voltage source is less than 5%. Do not use RC Voltage reduction or non-isolated power supply to drive LED Strip.
- In order to guarantee sufficient voltage is available to drive LED Strip in all conditions, make sure power supply is rated for 20% more than LED Strip consumption.
- Do not touch AC Power Supply when powered on
- Polarity Matters! Make sure to wire positive and negative poles of wires during installation to avoid damage to the strip.
- Avoid scratching, distorting, and repeated bending of product during installation. Not following this can cause irreparable damage to strip.
- Do not bend Pixel-Free LED with a radius less than 60mm (2.34")
- Product is not intended to be submerged and used in swimming pools or hot tubs
- Professional installation recommended